

United Way of Roanoke Valley

Senior Independence Issues

Background Data

2008 Update to the 2007 Report

Prepared by:



February 2008

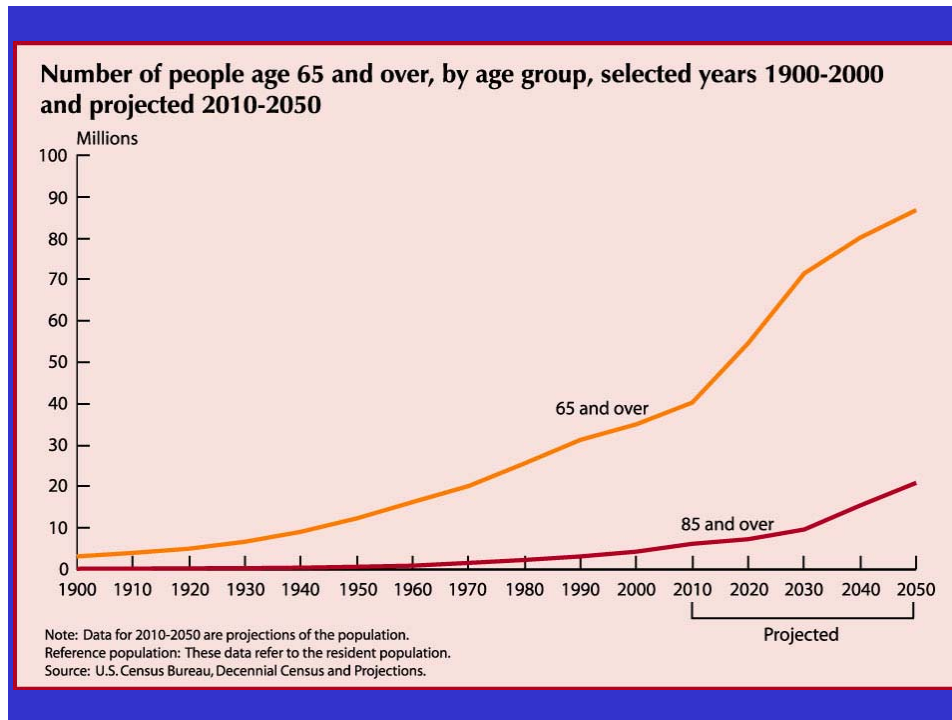
TABLE OF CONTENTS

I.	Senior Citizen Demographics.....	3
	Population Projections for the United States	
	Population Increase for the Roanoke Region	
	Population by Age Group	
	Population by Gender	
	Disability Characteristics	
	Living Arrangements	
II.	Senior Citizen Community Needs Assessments.....	10
	1995 and 2000 Community Needs Assessments	
	2000 Elderly Focus Group	
III.	Financial Resources.....	11
	Employment Status	
	Source of Income	
	Age of Worker by Industry	
	Poverty Status	
IV.	Medicare/Medicaid.....	14
	Enrollment in Medicare	
	Enrollment in Prescription Drug Plan	
V.	Transportation.....	16
	Services and Barriers	
VI.	Volunteerism.....	16
VII.	Capacity of Services.....	17
	Adult Care of Roanoke Valley	
	Family Service of Roanoke Valley	
	Local Office on Aging (LOA) Services	
	Regional Facilities	
VIII.	Abuse/Neglect.....	19

I. SENIOR CITIZEN DEMOGRAPHICS

Population Projections for 2010-2050

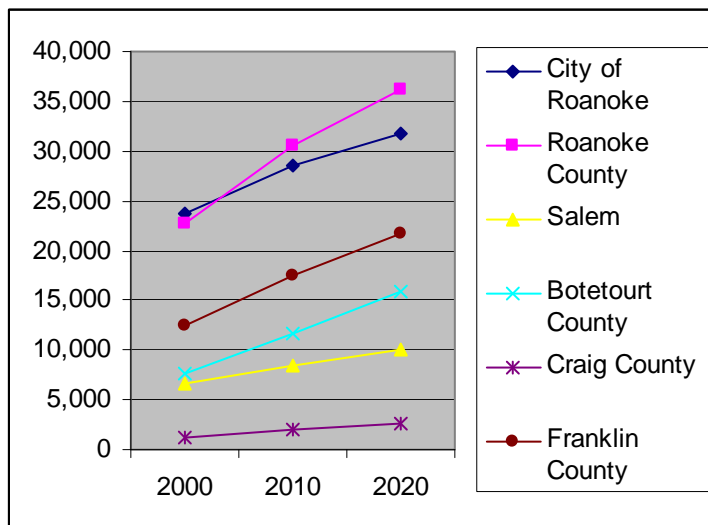
In the United States, it is anticipated that the population of adults over 65 years old will dramatically increase in the next 40 years.



U.S. Census, Decennial Census and Projections

Population Increase in Seniors Ages 55 Years and Older

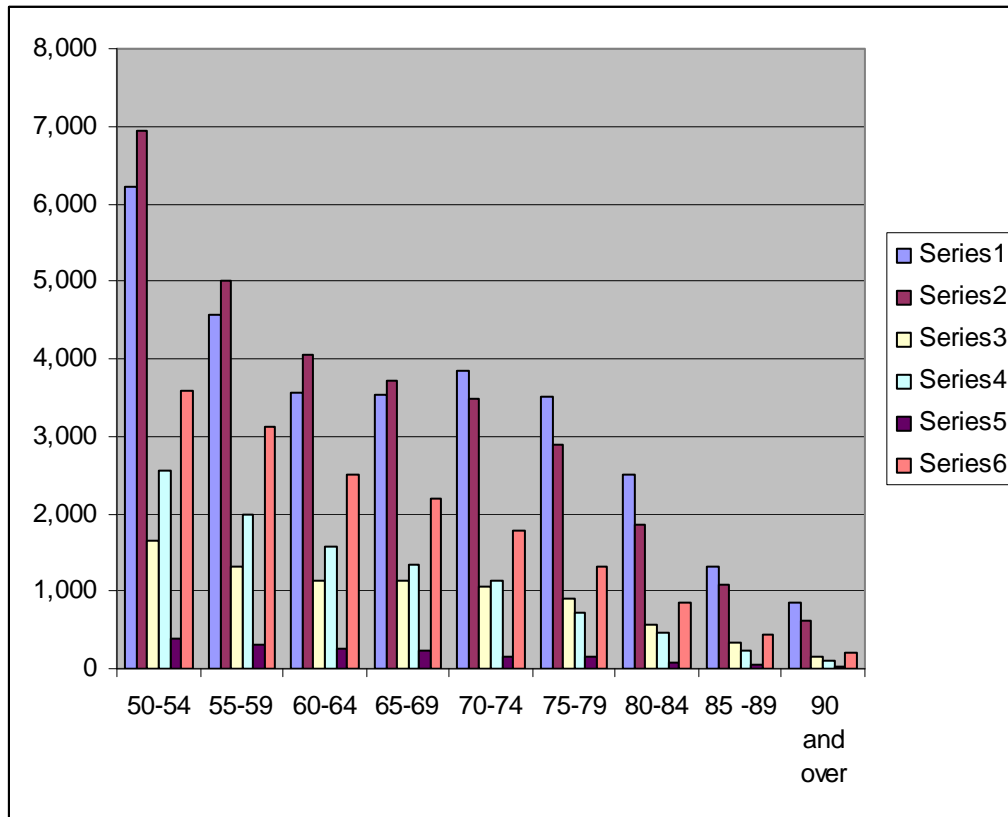
For the Roanoke Valley region in the next 10 years, the senior population will increase along with the population base for the other age groups. However, the City of Roanoke is an exception; overall population is expected to decrease slightly. Refer to handout.



Virginia Employment Commission, 2000 Census, Population Projections by Age Cohort 55+.

Population of Senior Citizens by Age Group in the Year 2000

Throughout the region, the majority of seniors are between 50 and 59 years old. It is a clear indication that the population of seniors will increase significantly in the future as the projection chart cited earlier indicates.



Series 1 - City of Roanoke
 Series 2 - Roanoke County
 Series 3 - Salem

Series 4 - Botetourt County
 Series 5 - Craig County
 Series 6 - Franklin County

	City of Roanoke	Roanoke County	Salem	Botetourt County	Craig County	Franklin County	Virginia
Total Population	94,911	85,778	24,747	30,496	5,091	47,286	7,078,515
50-54	6,224	6,950	1,664	2,566	393	3,592	473,035
55-59	4,555	5,014	1,328	1,985	322	3,127	358,442
60-64	3,549	4,063	1,146	1,564	261	2,514	273,169
65-69	3,525	3,709	1,132	1,339	239	2,182	229,553
70-74	3,841	3,475	1,050	1,135	153	1,782	202,903
75-79	3,503	2,896	900	735	153	1,304	166,178
80-84	2,493	1,861	578	470	72	854	106,433
85-89	1,325	1,072	323	234	44	445	57,778
90 and over	846	632	165	99	30	198	29,488

2000 U.S. Census Bureau, American Community Survey, Age and Sex.

Population of Senior Citizens by Gender for the Years 2000, 2005 and 2006

As is evident throughout the United States, females also outnumber males in this region. Even though in certain age ranges, the male population is higher, it is only so by a relatively small number.

	City of Roanoke 2006	Percent Difference from 2000-2006	Roanoke County 2006	Percent Difference from 2000-2006	Virginia 2006
Total Population	91,552		90,482		7,642,884
	M/F	M/F	M/F	M/F	M/F
50-54	2,851 / 2,927	+1 / -.6	3,611 / 3,993	-.1 / +.7	263,026 / 275,860
55-59	3,102 / 3,622	+2.7 / +2.4	3,875 / 3,483	+2.8 / +1.8	232,966 / 248,663
60-64	1,866 / 1,935	+1.0 / 0.0	2,202 / 2,693	+.4 / +.9	169,088 / 182,611
65-69	1,719 / 2,183	+.9 / +.3	1,629 / 2,136	-.5 / +.1	127,755 / 139,873
70-74	964 / 1,736	-1.2 / -1.0	1,453 / 1,578	-.4 / -1.0	93,938 / 116,560
75-79	1,006 / 2,034	-.6 / -.2	968 / 1,486	-.7 / -.6	71,392 / 101,019
80-84	1,257 / 2,381	+1.0 / +1.6	836 / 975	+.3 / -.6	45,090 / 81,592
85 and over	377 / 1,587		616 / 1,904		33,817 / 77,707

Population of Senior Citizens in the City of Roanoke and Roanoke County by Gender for 2000 and 2005

	City of Roanoke 2000	City of Roanoke 2005	Roanoke County 2000	Roanoke County 2005	Virginia 2005
Total Population	94,911	90,074	24,747	85,900	7,332,608
	M/F	M/F	M/F	M/F	M/F
50-54	2,963 / 3,261	3,220 / 3,281	3,370 / 3,580	3,843 / 3,883	257,368 / 274,338
55-59	2,077 / 2,478	2,593 / 2,750	2,451 / 2,563	3,969 / 3,221	225,197 / 244,274
60-64	1,573 / 1,976	1,798 / 2,606	1,186 / 2,202	1,922 / 2,780	168,004 / 176,629
65-69	1,442 / 2,083	1,046 / 1,303	1,693 / 2,016	1,587 / 2,206	117,960 / 135,290
70-74	1,561 / 2,280	1,631 / 2,702	1,503 / 1,972	1,587 / 1,500	92,938 / 108,984
75-79	1,339 / 2,164	1,046 / 2,075	1,185 / 1,711	1,128 / 1,324	67,917 / 97,709
80-84	870 / 1,623	669 / 1,689	643 / 1,218	836 / 1,280	46,469 / 75,161
85 -89	363 / 989	*836 / 1,592	278 / 794	*21 / 882	*2,502 / 56,371
90 and over	176 / 670		114 / 518		

2005 U.S. Census Bureau, American Community Survey, Age and Sex

*In the 2005 U.S. Census, the last category was defined as 85 years and over. The information was listed as percentages that were converted into numeric form.

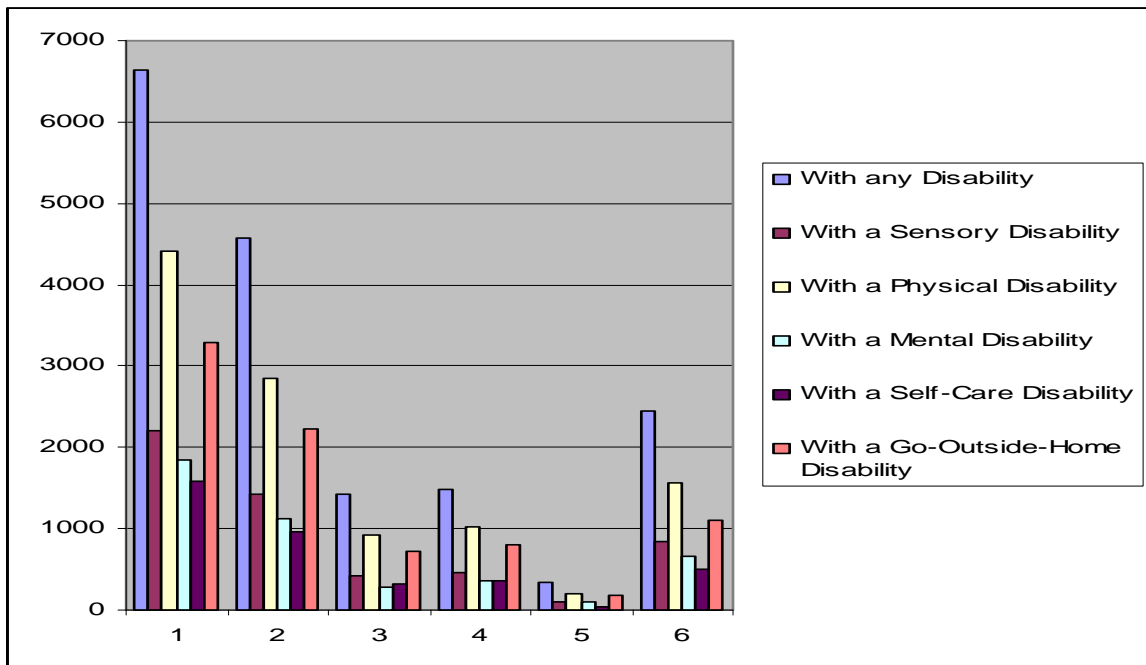
Population of Senior Citizens by Gender for the Year 2000

	Salem	Botetourt County	Craig County	Franklin County	Virginia
Total Population	24,747	30,496	5,091	47,286	7,078,515
	M/F	M/F	M/F	M/F	M/F
50-54	782 / 882	1,293 / 1,273	202 / 191	1,725 / 1,867	231,188 / 241,847
55-59	641 / 687	980 / 1,005	172 / 150	1,583 / 1,544	174,532 / 183,910
60-64	515 / 631	775 / 789	127 / 134	1,237 / 1,277	131,325 / 141,844
65-69	502 / 630	671 / 668	122 / 117	1,096 / 1,086	106,358 / 123,195
70-74	454 / 596	549 / 586	67 / 86	827 / 955	88,436 / 114,467
75-79	373 / 527	314 / 421	64 / 89	579 / 725	66,572 / 99,606
80-84	195 / 383	196 / 274	26 / 46	325 / 529	38,221 / 68,212
85 -89	90 / 233	76 / 158	16 / 28	135 / 310	16,906 / 40,872
90 and over	34 / 131	12 / 87	4 / 26	53 / 145	6,308 / 23,180

2005 U.S. Census Bureau, American Community Survey, Age and Sex

Disability Characteristics of Ages 65 and Over for the Year 2000

In 2000, the majority of seniors reported having more than one disability. When listing single disabilities, the majority of seniors had go-outside-home disability listed first, with physical disabilities second in the listing.



- 1-City of Roanoke
- 2-Roanoke County
- 3-Salem
- 4-Botetourt County
- 5-Craig County
- 6-Franklin County

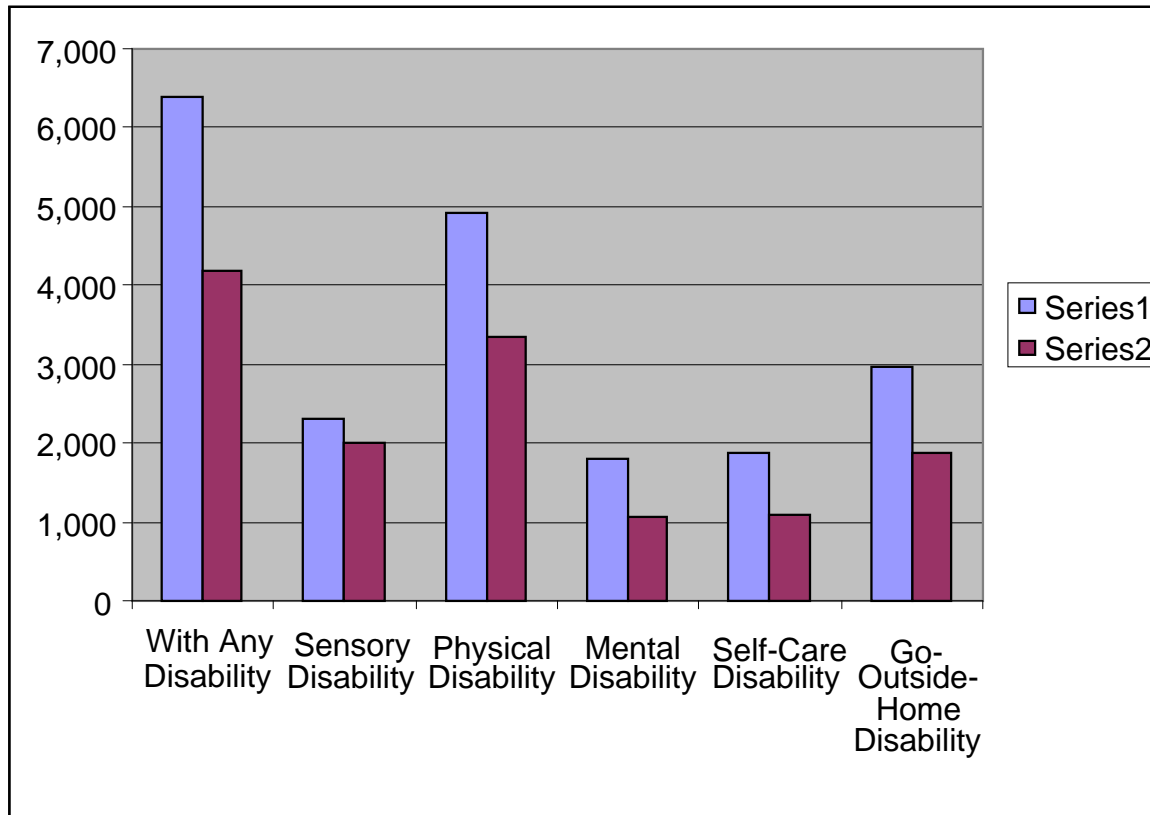
Disability Characteristics of Ages 65 and Over for the Year 2000

Type of Disability	City of Roanoke	Roanoke County	Salem	Botetourt County	Craig County	Franklin County	Virginia
With Any Disability	6,630	4,577	1,432	1,483	342	2,455	317,085
With Sensory Disability	2,205	1,423	430	470	108	834	103,068
With Physical Disability	4,421	2,841	915	1,029	199	1,560	219,291
With Mental Disability	1,845	1,127	285	364	94	669	83,977
With Self-Care Disability	1,582	964	318	355	50	504	76,135
With Go-Outside-Home Disability	3,291	2,234	719	805	171	1,095	156,053

2000, American FactFinder, U.S. Census Bureau, Disability Status by Sex

Disability Characteristics of 65 Years and Over for the Year 2005

Comparing 2000 data with 2005 data for the City of Roanoke and Roanoke County, there is a decrease in the number of people reporting mental disabilities and go-outside-home disabilities.



Series 1- City of Roanoke
Series 2- Roanoke County

2005 Data from the original report

- Chart below shows this data along with 2000 and 2006 data.

Type of Disability	City of Roanoke	Roanoke County	Virginia
Any Disability	6,400	4,184	329,219
Sensory Disability	2,303	2,010	128,395
Physical Disability	4,927	3,342	2558,968
Mental Disability	1,793	1,055	100,412
Self-Care Disability	1,881	1,081	80,659
Go-Outside-Home Disability	2,974	1,885	140,741
Total	14,579	12,564	823,048

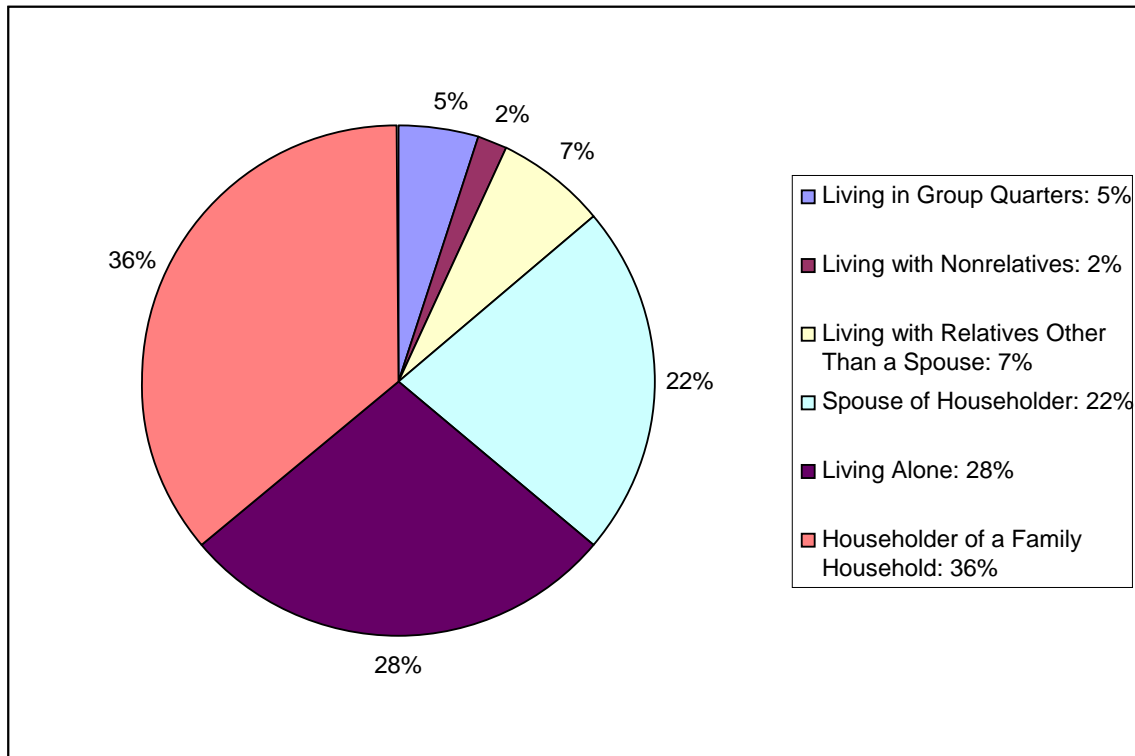
2005, American FactFinder, U.S. Census Bureau, Disability Status by Sex

Disability Characteristics of 65 Years and Over for the Years 2000-2006

Type of Disability	City of Roanoke 2000	City of Roanoke 2005	City of Roanoke 2006	Roanoke County 2000	Roanoke County 2005	Roanoke County 2006	Virginia 2006
With Any Disability	6,630	6,400	5,768	4,577	4,184	4,160	335,045
With Sensory Disability	2,205	2,303	1,781	1,423	2,010	1,649	128,928
With Physical Disability	4,421	4,927	4,014	2,841	3,342	3,198	247,636
With Mental Disability	1,845	1,793	1,561	1,127	1,055	1,399	100,089
With Self-Care Disability	1,582	1,881	767	964	1,081	1,099	83,973
With Go-Outside-Home Disability	3,291	2,974	2,027	2,234	1,885	1,973	147,589

Living Arrangements of Senior Citizens 65 and Over in the Year 2000

In the Commonwealth of Virginia, the majority of seniors are reported as head of a family household with the second largest number reporting that they live alone.



Weldon Cooper Center, UVa-Demographics and Workforce Section, Virginia Demographics, 2000 Census

Place	Percentage Living Alone
City of Roanoke	12.8%
Roanoke County	10.1%
Salem	12.2%
Botetourt County	7.6%
Craig County	10.5%
Franklin County	8.9%

U.S. Census 2000

Locally, more people 65+ years old live alone in the City of Roanoke and Salem.

II. SENIOR CITIZEN COMMUNITY NEEDS ASSESSMENTS

In 2003-2004, the Council of Community Services conducted an assessment with the human services community, its staff and clients on the needs of citizens and the gaps in services to meet those needs. The results which directly addressed senior citizens revealed several areas for improvement: low income of elderly, high cost of medications, availability of affordable transportation, social isolation and lack of knowledge of available programs and services geared to the senior population. These areas of need remained consistent in surveys from 1995 to 2004 as reported by agency staff and clients, including seniors. (2005, Report to the Community on Senior Citizen Issues).

1995 Community Needs Assessment

Top Five Community Problems Identified by Providers

Poverty among the elderly	87.0%
Abuse and neglect of the elderly	77.2%
Inadequate public transportation for elderly	64.1%
Homelessness	63.3%
Alcohol Abuse	51.5%

Top Five Problems Identified by Respondents 65+ Years

No transportation for job or stores	39.2%
No money for dental care	32.6%
No money for health care	31.8%
No money for medications	28.4%
No money for in-home care	21.0%

2000 CCS Human Services Assembly - Elderly Focus Group

In 2000, the Council of Community Services held an elderly focus group that listed the following five problems/barriers to receiving services:

- Low income of elderly
- High cost of medication
- Transportation
- Social isolation
- Lack of knowledge by consumers and providers

2000 Roanoke Valley Community Health Needs Assessment

Greatly Needed Services/Access Needs in the Roanoke Valley – Provider Survey*

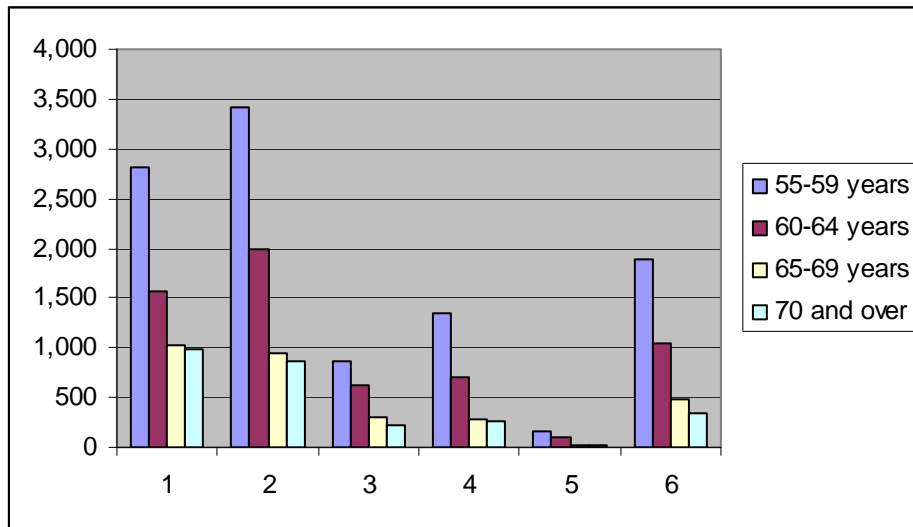
Affordable prescriptions for the elderly	69.0%
Affordable dental care for the elderly	44.0%
In-home care for the elderly	48.0%
Mental Health Services for the elderly	42.0%
Transportation to medical offices/services for the elderly	32.0%

*All groups surveyed cited medication costs as a serious issue. Of the providers, 57% identified depression and 50% identified poverty among the elderly as serious/extremely serious issues. (2005, Report to the Community on Senior Citizen Issues)

III. FINANCIAL AND HEALTH RESOURCES

Employment Status in the Year 2000

As expected, once seniors turn 65 years old, the number working decreases typically by 50% or more. The exception in this region is the City of Roanoke where the number of citizens working after 65 years old decreased by approximately 30%.



2000 U.S. Census Bureau, American Community Survey, Employment Status

- 1-City of Roanoke
- 2-Roanoke County
- 3-Salem
- 4-Botetourt County
- 5-Craig County
- 6-Franklin County

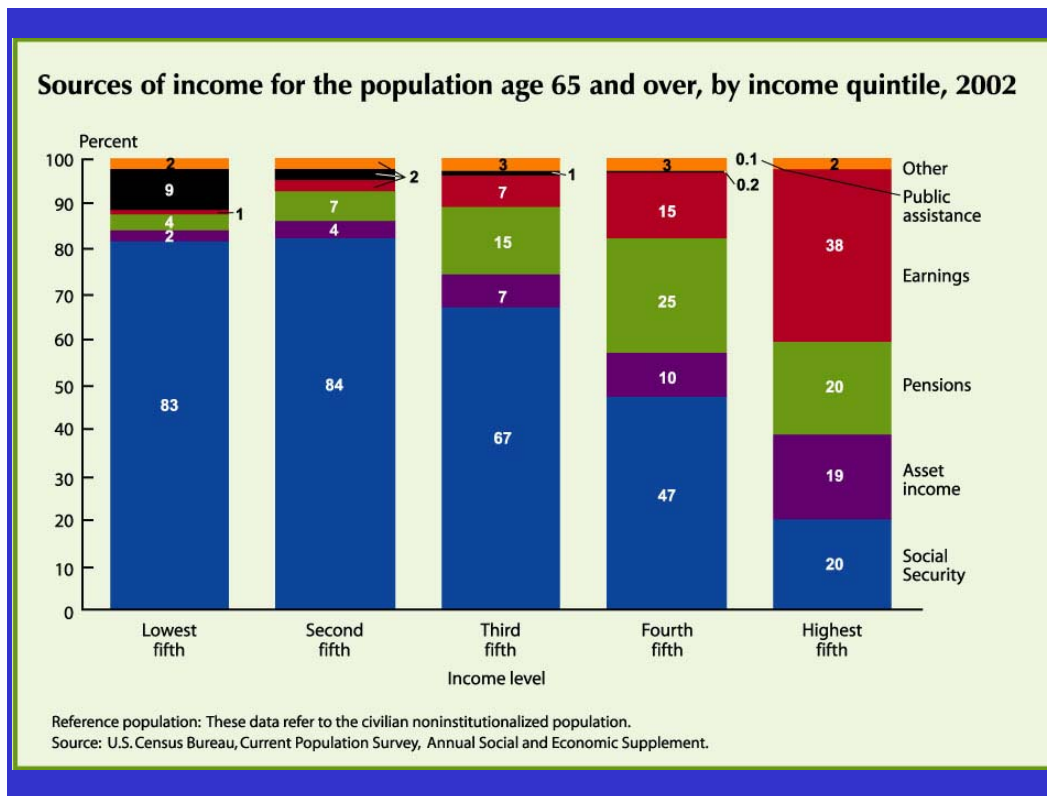
Employment Status by Locality in the Year 2000

Age	City of Roanoke	Roanoke County	Salem	Botetourt County	Craig County	Franklin County	Virginia
55-59 years	2,815	3,413	873	1,343	170	1,898	238,204
60-64 years	1,577	1,981	622	702	101	1,055	128,891
65-69 years	1,020	940	311	287	21	486	57,956
70 and over	977	870	228	257	16	343	48,689

2000 U.S. Census Bureau, American Community Survey, Employment Status

Sources of Income for Seniors Age 65 and Over in the Year 2002

Social security is still the main source of income for seniors in the lowest to fourth income levels. At the highest income level, the majority live off their earnings.



2002 U.S. Census, Current Population Survey, Annual Social and Economic Supplement

Seniors Age 65 and Over, Top Three Employment Industries, in the Year 2000

In this region as well as in the state, the majority of seniors work in the retail industry.

Place	Industry (Number)	Industry (Number)	Industry (Number)
City of Roanoke	Retail Trade (541)	Health Care and Social Assistance (383)	Accommodation and Food Services (207)
Roanoke County	Educational Services (244)	Retail Trade (209)	Health Care and Social Assistance (186)
Salem	Retail Trade (167)	Manufacturing (154)	Health Care and Social Assistance (111)
Botetourt County	Health Care and Social Assistance (60)	Wholesale Trade (44)	Educational Services (43)
Craig County	Public Administration (11)	Retail Trade (9)	Accommodation and Food Services (4)
Franklin County	Retail Trade (136)	Manufacturing (112)	Educational Services (90)
Virginia	Retail Trade (18,222)	Educational Services (16,158)	Health Care and Social Assistance (12,422)

2000 Census, VA Employment Commission, Age of Workers by Industry

Poverty among Seniors Age 65 and Over in the Years 2000 and 2005

Compared to the state, this region's average is below the state's average of seniors living in poverty. However, if taken individually, the City of Roanoke, Craig County and Franklin County are above the state average.

Place	Poverty in 2000	Poverty in 2005	Poverty in 2006
City of Roanoke	1,672 (11.3%)	1,848 (12.7%)	1,096 (8.0%)
Roanoke County	602 (4.9%)	579 (4.6%)	464 (3.7%)
Salem	313 (8.1%)	NA	NA
Botetourt County	261 (6.5%)	NA	NA
Craig County	73 (10.5%)	NA	NA
Franklin County	640 (9.8%)	NA	NA
Virginia	71,545 (9.5%)	79,691 (9.7%)	77,646 (9.0%)

U.S. Census Bureau, American Community Survey, Poverty Status

IV. Medicare / Medicaid

Enrollment in Medicare for the Year 2002

When comparing Year 2002 and 2003, with the exception of the City of Roanoke, the number of seniors receiving Hospital Insurance (HI) and/or Supplementary Medical Insurance (SMI) is increasing.

Location	SMI	HI	HI and/or SMI
City of Roanoke	19,948	19,859	19,203
Roanoke County	5,428	5,400	5,212
Salem	5,533	5,517	5,334
Botetourt County	3,951	3,943	3,831
Craig County	609	605	588
Franklin County	6,021	6,000	5,855
Virginia	782,346	774,926	746,085

CMS Website, Centers for Medicare and Medicaid Services

Enrollment in Medicare for the Year 2003

Location	SMI	HI	HI and/or SMI
City of Roanoke	19,656	19,577	18,896
Roanoke County	5,599	5,577	5,358
Salem	5,597	5,579	5,385
Botetourt County	4,046	4,039	3,921
Craig County	608	603	588
Franklin County	6,189	6,169	6,013
Virginia	795,438	788,350	757,374

CMS Website, Centers for Medicare and Medicaid Services

Enrollment in Prescription Drug Plan

Throughout the region, the numbers enrolled in these plans are increasing.

Location	Enrolled for 2006	Enrolled for 2007
City of Roanoke	13,012	13,327
Roanoke County	12,690	13,324
Salem	3,903	4,039
Botetourt County	4,079	4,308
Craig County	715	763
Franklin County	7,211	7,609
Virginia	781,412	806,145

State Enrollment in Prescription Drug Plans, Centers for Medicare and Medicaid Services

V. TRANSPORTATION

Several transportation alternatives exist from which seniors may choose:

- Personal vehicle
- Family or friends provide transportation
- Taxi or private car services
- Valley Metro bus system
- RADAR

The map [see handout] includes the Valley Metro bus routes, the distribution of senior citizens living areas, location of medical clinics and of shopping centers. Significant numbers of Roanoke Valley seniors do not live within *easy walking distance* of a bus stop. During inclement weather, snow bus stops may also be prohibitively far to walk.

The Unified Human Services Transportation System, Inc. (RADAR) STAR program provides specialized transportation services to individuals who are unable to ride Valley Metro's regular bus routes. Riders are physically or mentally disabled, *elderly*, and indigent or transportation disadvantaged. This service is provided to qualified persons living in the City of Roanoke, Salem, and the Town of Vinton and as required by the Americans with Disabilities Act of 1991. It is projected that the STAR program, during 2004-2005 will serve 2,500 unduplicated clients with 38,575 units of service (one-way rides) at a cost of \$540,050 (\$14 per unit). This is an 11% increase in the number of clients and a 3% increase in the number of units of service. Since 1991, the rider ship has increased over five times. This program is barred from maintaining a waiting list by the Americans with Disabilities Act of 1991. Service is provided to eligible individuals. Those ineligible are referred to the League of Older Americans, Medicaid or the Council of Community Services (2005, Report to the Community on Senior Citizen Issues).

Barriers to adequate access to transportation resources include the following:

- Public reluctance to use public transportation;
- Safety and mobility issues (walking distance to bus stops, weather, sidewalk conditions) may prevent many from using public transit;
- Time commitment to public transit may be an impediment to some. To travel from parts of Salem [Richfield area, for example], to the outer reaches of Valley Metro routes can take almost two hours and require two bus changes. Most other areas of Roanoke City and Vinton can be accessed within one hour with only one bus change at Campbell Court;
- Narrow jurisdictional focus;
- RADAR services are unavailable on weekends; and
- Lack of knowledge of transportation resources.

2005, Report to the Community on Senior Citizen Issues, Transportation Committee

VI. Volunteerism

The Retired and Senior Volunteer Program (RSVP) at the Council of Community Services currently has just under 300 volunteers aged fifty-five and older. Some places that they may volunteer their time include churches, neighborhood organizations and other agencies, such as civic organizations, hospitals, museums, and the school system.

VII. Capacity of Services

	Capacity	Openings Available	Waiting List
Adult Care of Roanoke Valley – Adult Day Care Program *			0
Family Service of Roanoke Valley – Adults Plus Program (counseling)			8
Family Service of Roanoke Valley – Home Care Aide			14
LOA – In-Home Services: Meals on Wheels	625 for lunch 60 people for breakfast	25 for lunch 0 for breakfast	0 for lunch 100 for breakfast
LOA – Family Caregiver Support Services: Personal Care		No	20 People
LOA – Critical Assistance Services: Senior Services			(Waiting on reply)
LOA – Family Caregiver Support Services: Adult Day Care			(Waiting on reply)
LOA – Life Enhancement Services: Senior Companions	46	No	50 People
LOA – Vital Services: Transportation **	46	No	0

*Those not accepted into program, staff provide referral information.

**Staff try to provide, at least, 1 ride/month until funds are exhausted. Then, they refer clients to RADAR.

Regional Facilities for the Elderly

Based on the data that could be gathered, the regional assisted living and nursing home facilities are at or near capacity.

Independent Living

	City of Roanoke	Roanoke County	Salem	Botetourt County	Franklin County
Facilities Contacted	1	2	3	1	NA
Facilities Responding	0	2	3	1	NA
# of Beds Reported	NA	237	198	153	NA
# of Beds Available	NA	NA	NA	50	NA
Facilities Reporting No Availability	NA	0	1	0	NA
Facilities Reporting Availability	NA	2	2	1	NA

Assisted Living

	City of Roanoke	Roanoke County	Salem	Botetourt County	Franklin County
Facilities Contacted	13	3	4	5	1
Facilities Responding	12	3	3	5	1
# of Beds Reported	758	185	227	442	40
# of Beds Available	47	NA	14	16	1
Facilities Reporting No Availability	4	1	0	0	0
Facilities Reporting Availability	8	2	3	5	1

Nursing Homes

	City of Roanoke	Roanoke County	Salem	Botetourt County	Franklin County
Facilities Contacted	8	1	3	2	2
Facilities Responding	7	1	3	2	2
# of Beds Reported	1,030	180	600	92	300
# of Beds Available	12	NA	30	9	NA
Facilities Reporting No Availability	1	0	1	0	0
Facilities Reporting Availability	6	1	2	2	2

VIII. Abuse/Neglect

In the Commonwealth of Virginia, the average monthly caseload for Case Type 74 has continued to decrease. The other types of cases have fluctuated during the years 1999-2002.

Case Type	Average Monthly Caseload 1999	Average Monthly Caseload 2000	Average Monthly Caseload 2001	Average Monthly Caseload 2002
74	1,745	2,141	2,157	2,220
82	1,427	1,444	1,385	1,465
86	7,572	7,763	7,545	7,773
All Case Types	10,744	11,348	11,089	11,458

2005 Program Report, Virginia Department of Social Services

Definitions: Case Type 74: Adult Protective Services cases
Case Type 82: Intense services/prevention requiring monthly contacts
Case Type 86: Stabilization/support services; ongoing (i.e., open longer than 45 days)