

Emergency Department Visits for Unintentional Drug and Heroin Overdoses among Virginia Residents, January 2015 – August 2016

Report Generated: September 9, 2016

Chief complaints and discharge diagnoses of emergency department (ED) visits are analyzed to characterize the burden of unintentional drug and heroin overdoses across Virginia. This report includes visits of Virginia residents to 81 acute care hospital EDs and 13 free-standing EDs that occurred between January 1, 2015 and August 31, 2016.

Report Highlights: In August 2016, emergency department (ED) visits for unintentional drug overdose among residents in Virginia increased by 8% while visits for unintentional heroin overdose decreased by 20% compared to July 2016.

By health planning region, ED visits for unintentional heroin overdose decreased in four out of five regions. Visits in the Southwest Region increased from 4 to 8 visits but still accounted for the smallest proportion of visits by region (8%).

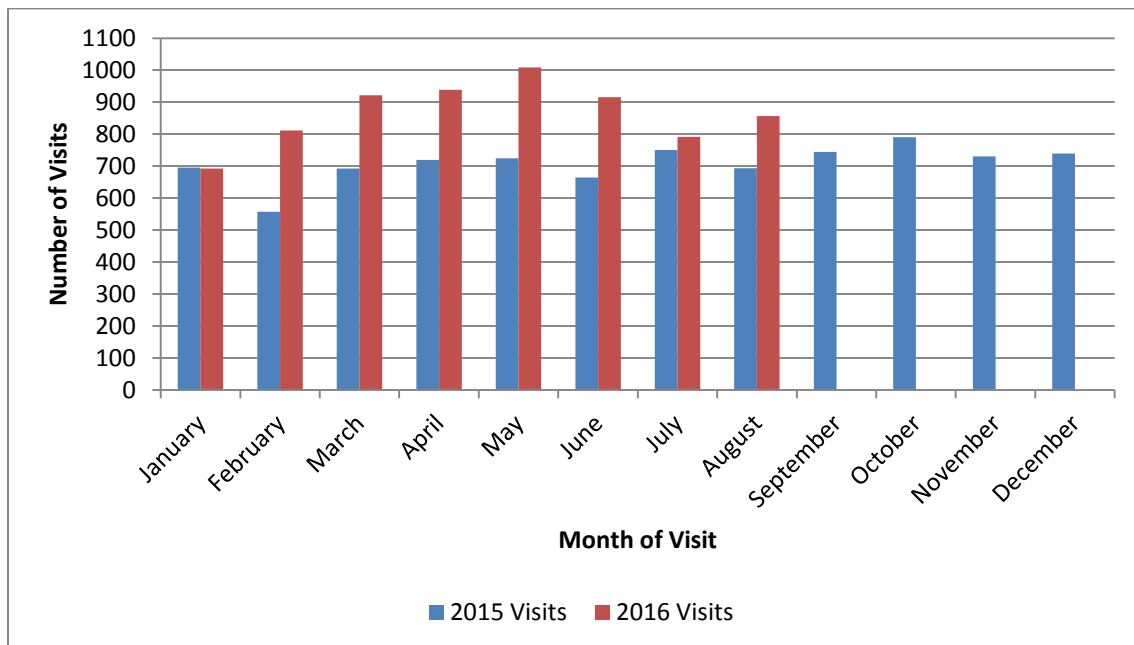
By sex, the number of ED visits for unintentional heroin overdose among females remained the same between July and August, while the number of visits among males decreased by 24 (28%).

By age group, ED visits for unintentional heroin overdose among 25 to 34 year olds continued to decrease for the 5th month in a row, but still accounted for the highest proportion of visits statewide (37%). ED visits for unintentional heroin overdose decreased among every age group except those 65 or older which remains the smallest proportion of visits (1%).

1. Number of ED Visits with Chief Complaint of Unintentional Drug Overdose among Virginia Residents by Month, 2015-2016

Inclusion terms from Chief Complaint only: overdose, OD, O/D, intoxication, substance abuse

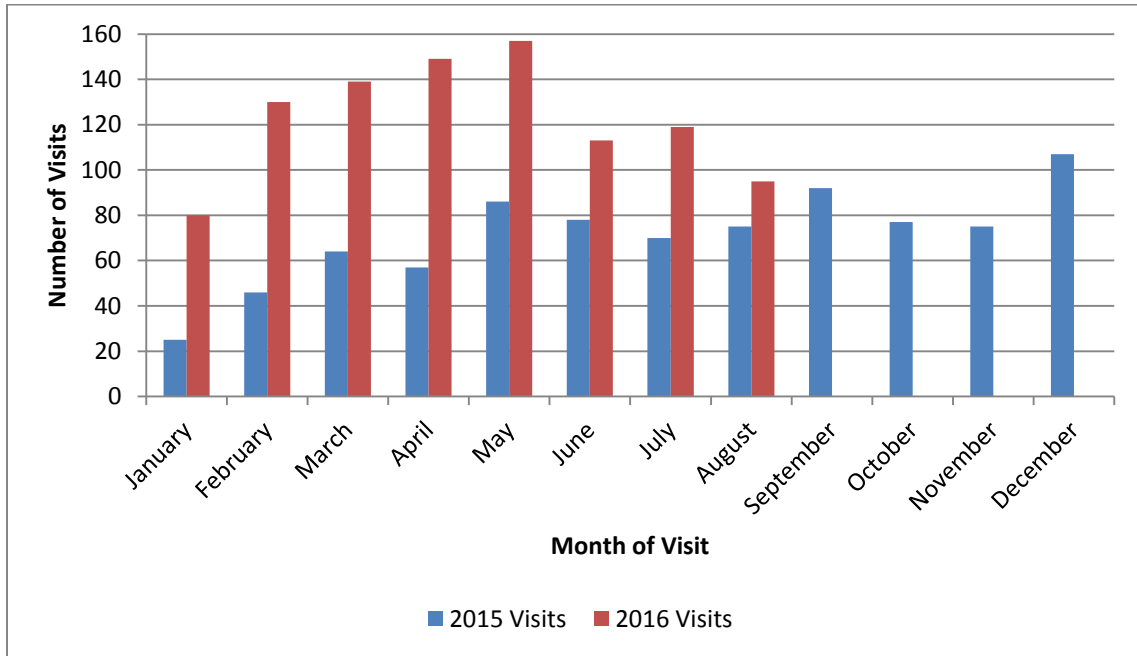
Exclusions terms from either Chief Complaint or Discharge Diagnosis: suicide, suicidal, intentional, alcohol



Unintentional heroin related ED visits are not excluded in the graph as these may be included when a chief complaint contains the terms “heroin overdose.”

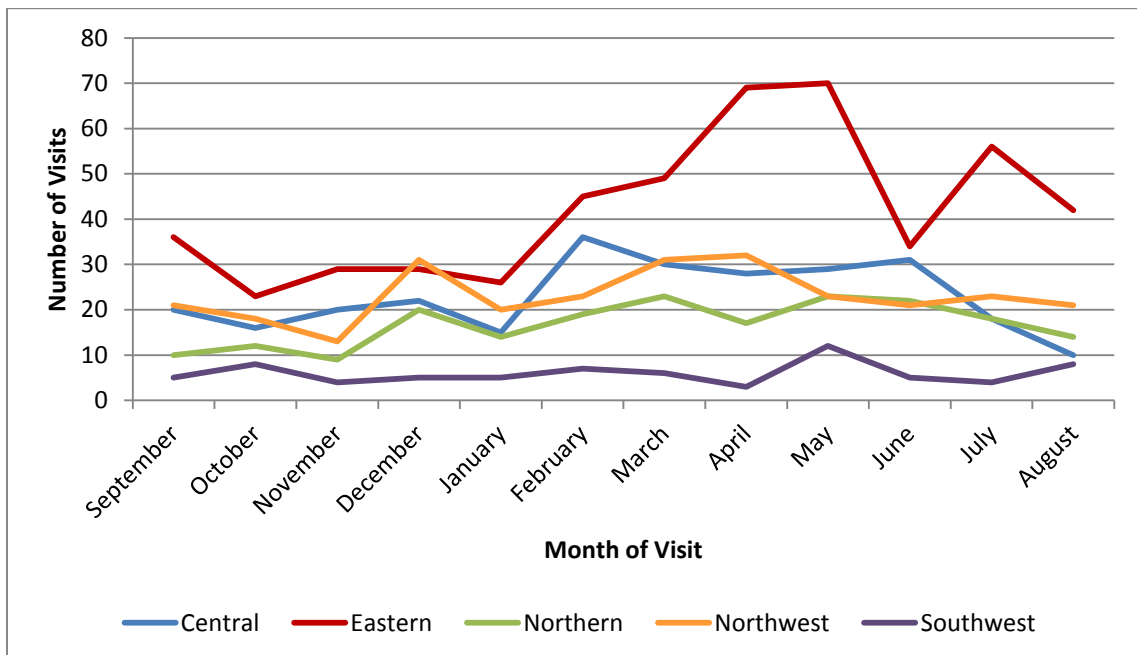
2. Number of ED Visits with Chief Complaint or Discharge Diagnosis of Unintentional Heroin Overdose among Virginia Residents by Month, 2015-2016

*Inclusion terms from either Chief Complaint or Discharge Diagnosis: heroin, herion, 965.01, T40.1X1A, T40.1X4A
Exclusions terms from Chief Complaint only: withdrawal, withdrawal, detox*



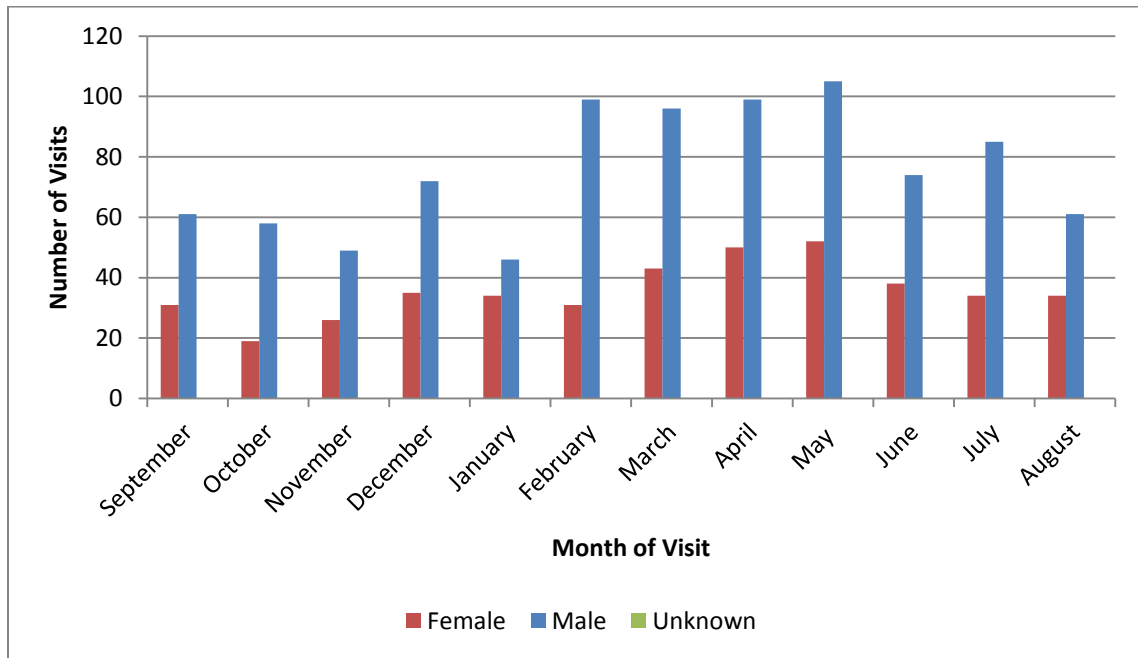
3. Number of ED Visits with Chief Complaint or Discharge Diagnosis of Unintentional Heroin Overdose among Virginia Residents by Month and Region, Previous 12 Months of 2015-2016

*Inclusion terms from either Chief Complaint or Discharge Diagnosis: heroin, herion, 965.01, T40.1X1A, T40.1X4A
Exclusions terms from Chief Complaint only: withdrawal, withdrawal, detox*



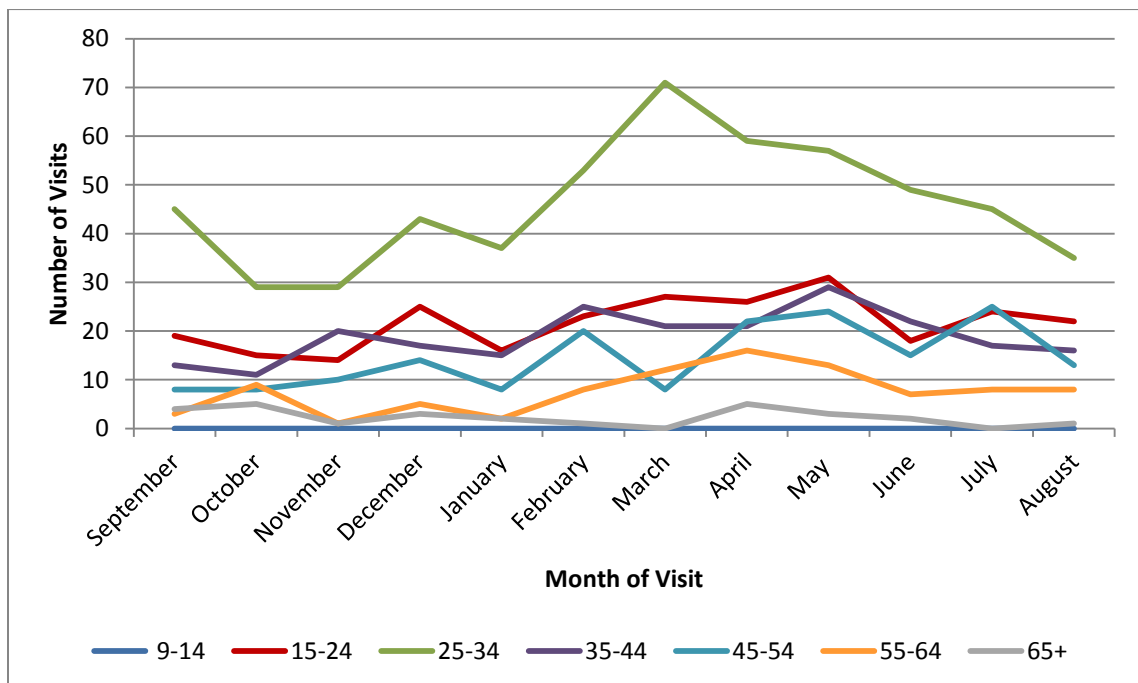
4. Number of ED Visits with Chief Complaint or Discharge Diagnosis of Unintentional Heroin Overdose among Virginia Residents by Month and Sex, Previous 12 Months of 2015-2016

*Inclusion terms from either Chief Complaint or Discharge Diagnosis: heroin, herion, 965.01, T40.1X1A, T40.1X4A
Exclusions terms from Chief Complaint only: withdrawal, withdrawal, detox*



5. Number of ED Visits with Chief Complaint or Discharge Diagnosis of Unintentional Heroin Overdose among Virginia Residents by Month and Age Group (years)*, Previous 12 Months of 2015-2016

*Inclusion terms from either Chief Complaint or Discharge Diagnosis: heroin, herion, 965.01, T40.1X1A, T40.1X4A
Exclusions terms from Chief Complaint only: withdrawal, withdrawal, detox*



*Individuals less than 9 years of age are excluded from analyses

6. Rate of ED Visits with Chief Complaint or Discharge Diagnosis of Unintentional Heroin Overdose among Virginia Residents by Health District and Month, Previous 12 Months of 2015-2016

Inclusion terms from either Chief Complaint or Discharge Diagnosis: heroin, herion, 965.01, T40.1X1A, T40.1X4A

Exclusions terms from Chief Complaint only: withdrawal, withdrawal, detox

Health district-specific rates of unintentional heroin overdose visits were calculated per 100,000 population* in order to describe geographic distribution across Virginia. Health district is based on zip code of patient residence. Visits missing zip code of patient residence were excluded from rate calculations.

Changes in rate of ED visits for heroin overdoses between July and August 2016: increase in 5 districts, decrease in 18 districts, and no change in 12 districts

Locality	Population Estimate	Rate per 100,000 Population by Month											
		Sept	Oct	Nov	Dec	Jan	Feb	Mar	Apr	May	June	July	Aug
Alexandria	150,575	1.33	0	0	1.33	0.66	0	0.66	0.66	0	1.33	0.66	0.66
Alleghany	179,224	0	1.67	0.56	1.12	0	0.56	0.56	0.56	2.79	0.56	0	2.79
Arlington	226,908	0	0	0	0	0.44	0.44	0	0.44	0	0.44	0	0
Central Shenandoah	293,467	0	0.68	0	0	0.68	0.34	1.02	0.34	0	0	0.68	0.34
Central Virginia	257,835	0	0	0	0	0	0	0.39	0.39	0.39	0	0	0
Chesapeake	233,371	3.43	1.71	2.57	2.57	0.86	3.00	3.43	6.86	4.29	2.57	4.29	3.86
Chesterfield	378,679	1.32	0.79	1.58	1.32	0.53	3.96	1.32	0.53	0.79	2.38	0.53	0
Chickahominy	150,898	0.66	0	1.33	1.99	0.66	1.33	0	0.66	1.33	1.99	0.66	0
Crater	155,789	1.28	1.28	1.28	0.64	0	3.85	2.57	0.64	1.93	0	1.28	0.64
Cumberland Plateau	109,889	0	0	0	0	0	0	0	0	0	0	0	0
Eastern Shore	45,142	0	0	0	0	0	0	2.22	2.22	0	0	0	0
Fairfax	1,175,622	0.26	0.51	0.34	1.11	0.34	0.60	0.85	0.77	1.11	0.85	0.94	0.68
Hampton	136,879	0.73	0.73	2.19	0.73	0	1.46	3.65	3.65	6.58	0.73	4.38	2.19
Henrico	321,924	1.86	1.24	0.62	1.24	1.86	2.49	2.49	4.97	2.80	1.55	2.17	1.24
Lenowisco	91,301	0	0	0	0	0	0	0	0	0	0	0	0
Lord Fairfax	230,199	2.61	0.43	0.87	3.48	0.87	2.61	1.30	1.30	3.48	1.74	2.61	2.17
Loudoun	363,050	0.28	0.28	0.55	1.10	0.55	1.38	2.20	1.38	0.83	0	0.55	0
Mount Rogers	190,942	0	0.52	0	0	0	0	0	0	0	0	0	0
New River	181,605	0	0	0	0	0	0	0	0	0	0	0	0
Norfolk	245,428	2.44	1.22	2.85	2.04	0.41	5.30	5.30	8.15	6.52	2.85	2.85	5.30
Peninsula	348,629	0.86	0.86	0.57	1.15	2.01	0.86	0.29	1.72	2.29	0.86	2.01	0.86
Piedmont	102,939	0.97	0	0	1.94	0	1.94	0	0	0	1.94	0	0
Pittsylvania-Danville	104,827	0	0	0	0	0	0	0	0	0	0	0	0

Locality	Population Estimate	Rate per 100,000 Population by Month											
		Sept	Oct	Nov	Dec	Jan	Feb	Mar	Apr	May	June	July	Aug
Portsmouth	96,004	7.29	4.17	2.08	3.12	3.12	5.21	3.12	5.21	10.42	7.29	8.33	7.29
Prince William	503,349	0.79	0.79	0.60	0.20	1.19	1.19	0.79	0.20	1.39	1.59	0.79	0.99
Rappahannock	352,679	1.42	0.28	0.85	2.84	1.42	1.42	3.69	1.98	1.13	1.42	0.85	2.55
Rappahannock-Rapidan	172,958	2.89	2.89	2.89	1.73	4.63	5.20	4.63	8.09	2.89	3.47	4.05	2.89
Richmond City	217,853	2.30	3.21	3.67	3.21	2.75	1.38	5.97	3.67	5.51	5.51	2.75	1.84
Roanoke	99,428	5.03	3.02	2.01	3.02	5.03	4.02	4.02	0	6.03	4.02	3.02	2.01
Southside	82,890	0	0	0	0	0	0	0	0	0	0	0	1.21
Thomas Jefferson	244,403	2.05	3.68	1.23	2.86	1.23	0.82	1.64	2.45	2.45	2.45	2.05	0.41
Three Rivers	140,811	0.71	1.42	0	2.84	0.71	2.84	2.84	2.13	0	0.71	2.84	0
Virginia Beach	450,980	2.22	1.11	0.89	1.11	2.66	2.00	2.66	2.44	3.10	1.33	2.00	0.44
West Piedmont	140,414	0	0.71	0	0	0	1.42	0	0.71	0	0	0.71	0.71
Western Tidewater	149,398	0	0.67	3.35	0.67	0	1.34	1.34	1.34	2.01	2.01	3.35	3.35
VIRGINIA TOTAL	8,326,289	1.10	0.91	0.89	1.25	0.96	1.56	1.67	1.78	1.89	1.35	1.43	1.14

*Rates were calculated utilizing the 2015 U.S. Census locality population estimates, available through the U.S. Census <https://www.census.gov/popest>.

Please direct questions or comments to the Division of Surveillance and Investigation, Enhanced Surveillance Team:
syndromic@vdh.virginia.gov